




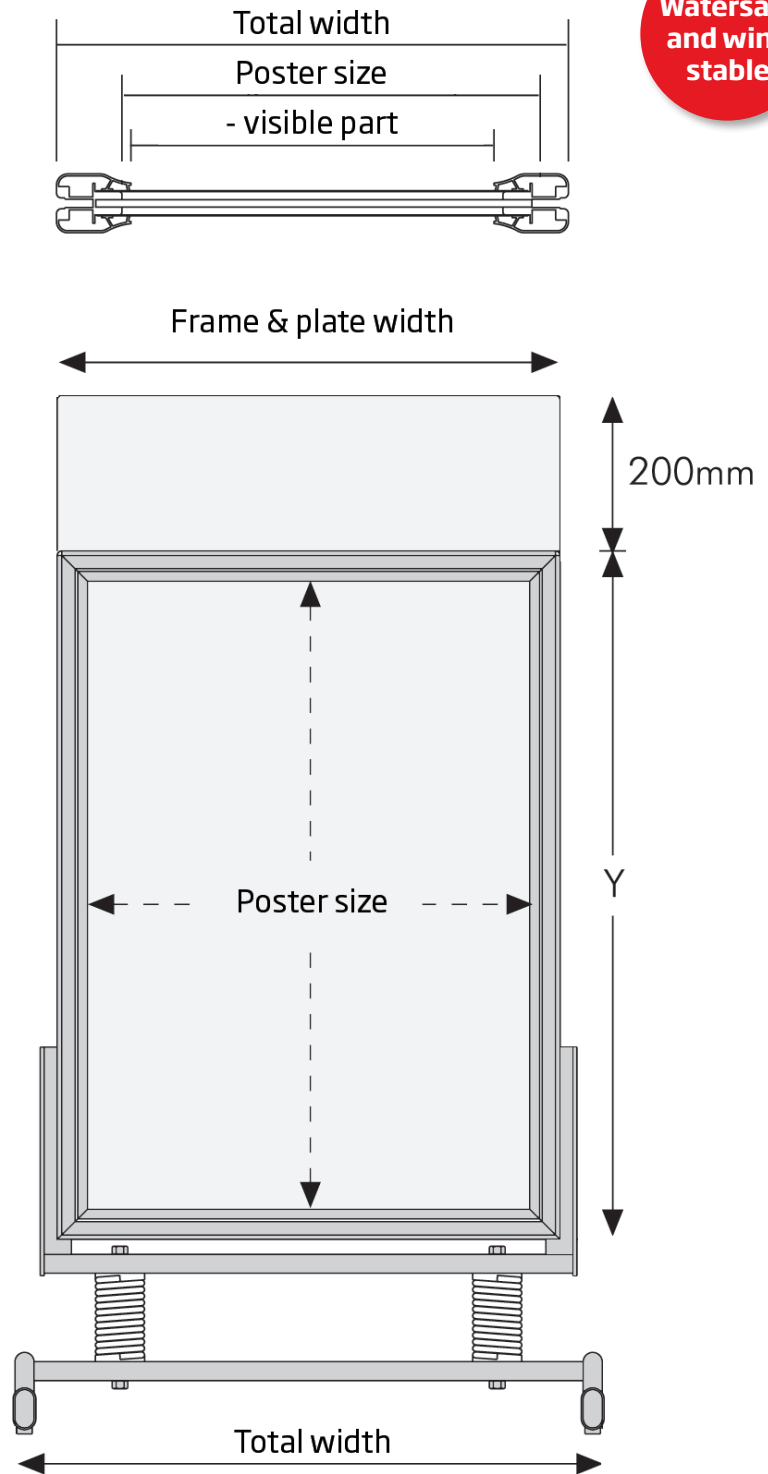
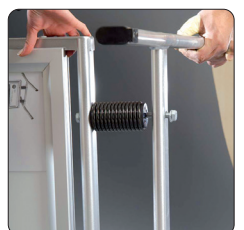
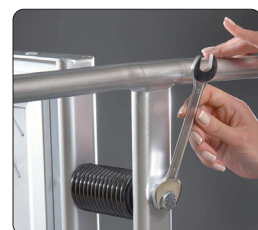
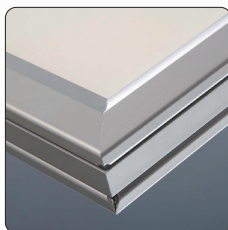
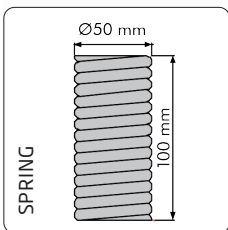
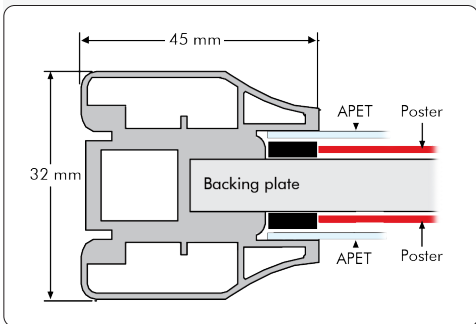
**Watersafe
and wind
stable**



 Quality pavement board produced in 45 mm silver anodized alu snap-frames with mitred corners. APET anti-reflex front panels. Mounted with black rubber to protect the poster from water. Springs are made of steel and the feet are powder coated (RAL 9006).

 Qualitets Strassenständer mit 45 mm Alu Klapp-Rahmen und Ecken auf Gehrung. Polyester-lackiertem Stahlfüsse (RAL 9006) und Stahlfedern. Mit entspiegelte APET Frontplaten. Mit schwarzem Gummi monteret zum Schutz gegen Wasser.

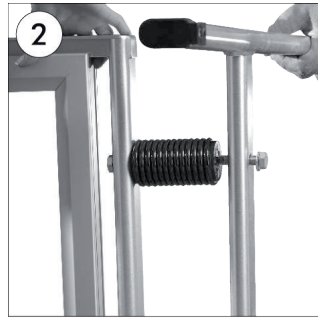
 Kvalitetsprodukt med 45 mm alu snap-frames og geringshjørner. Polyesterlakerede stålbæn (RAL 9006). Monteret med stål fjedre. Antirefleks APET frontplader. Skumliste monteret mod indtrængning af vand.



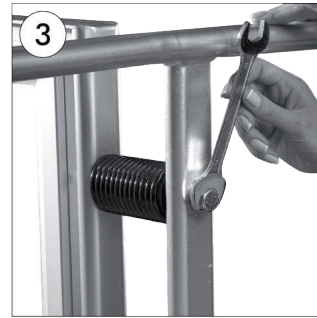
Model	Article	Poster size	Visible part	Color	Total W x H x D	Package size and weight	Pallet size and quantity
125	4657	50 x 70 cm	48,2 x 68,2 cm	Alu/silver	61,2 x 101 x 90 cm	71 x 99 x 11 cm 15,2 kg	80 x 120 x 220 cm 20 pcs.
125	4655	59,4 x 84,1 cm A1	57,6 x 82,3 cm	Alu/silver	70,6 x 115 x 105 cm	80 x 120 x 12 cm 16,0 kg	80 x 120 x 220 cm 18 pcs.
125	4658	70 x 100 cm	68,2 x 98,2 cm	Alu/silver	88 x 131 x 124 cm	85 x 130 x 12 cm 21,0 kg	80 x 120 x 220 cm 7 pcs.
125	4656	84,1 x 119 cm A0	82,3 x 117,1 cm	Alu/silver	95,3 x 150 x 140 cm	100 x 150 x 12 cm 25,0 kg	100 x 120 x 220 cm 15 pcs.
125	4659	100 x 140 cm	98,2 x 138,2 cm	Alu/silver	111,2 x 171 x 160 cm	120 x 170 x 12 cm 34,0 kg	120 x 120 x 220 cm 15 pcs.



- GB** Connect the pieces as shown in the picture.
DE Die Schraube durch die Scheibe und das Röhrchen wie abgebildet durchstecken.
DK Saml delene som vist på billedet.



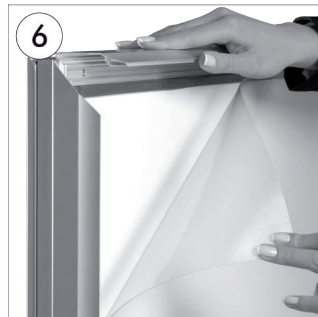
- GB** Attach the legs on springs by screw unit.
DE Die Schrauben sind durch die Bohrungen am Fussteil durchzustechen und an die Verzahnung unter der Feder befestigen.
DK Sæt skruerne igennem de forbo-rede huller i foden.



- GB** Fix the base, frame and the springs by tightening the screws with wrench.
DE Mit Hilfe eines Maulschlüssels die Schrauben festziehen.
DK Skru foden, rammen og fjederne sammen med en skruenøgle.



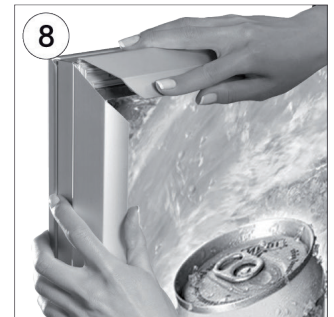
- GB** Open all profiles.
DE Alle Profile aufklappen.
DK Åben profilerne



- GB** Take-off the front panel.
DE Frontscheibe abheben.
DK Løft frontpladen



- GB** Place the poster under the front panel.
DE Poster unter Frontscheibe einlegen.
DK Læg plakaten ind under frontpladen.



- GB** Close the profiles.
DE Die Seitenprofile zuklappen.
DK Luk profilerne.



**Watersafe
and wind
stable**